



**CABINETCORP™**

**BY CABINET PROFESSIONALS,  
FOR CABINET PROFESSIONALS**



## **Designer quality cabinets, flooring, and closet solutions without the designer price tag**

**With more than 30 years of experience,  
CabinetCorp is the proven industry leader in  
the manufacture of kitchen and bathroom  
cabinets at below-market pricing.**

**With a large variety of cabinet finishes, accessories &  
solutions, let our team help you customize and bring  
your dream space to life. We can assist you with  
everything from measuring all the way to the  
installation, all with exceptional customer service!**





**Cabinets**



**Closets**



**Flooring**



## Free Design Services!

When working with CabinetCorp, you will be partnered with one of our amazing kitchen designers. You will receive a certified 2020/3D kitchen rendering, FREE. We will show you how your newly remodeled kitchen will look before purchasing.



# Customizable to fit your design

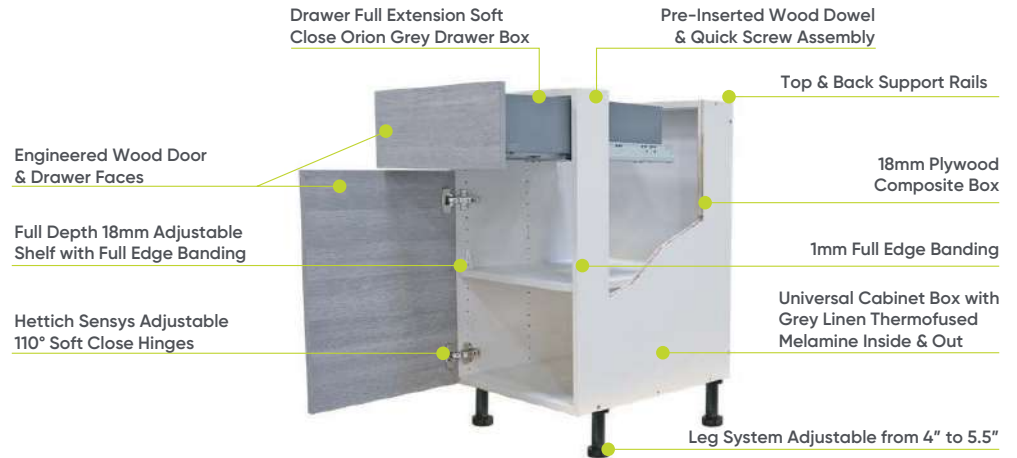
## Framed vs. Frameless Cabinets?

Framed Cabinets are typically the standard you would see in most American homes. The framed construction uses a face frame that is attached to the cabinet box, adding additional sturdiness to the cabinet box. With the presence of rails and stiles on the face frame, they make for easier installation and door/drawer adjustments.

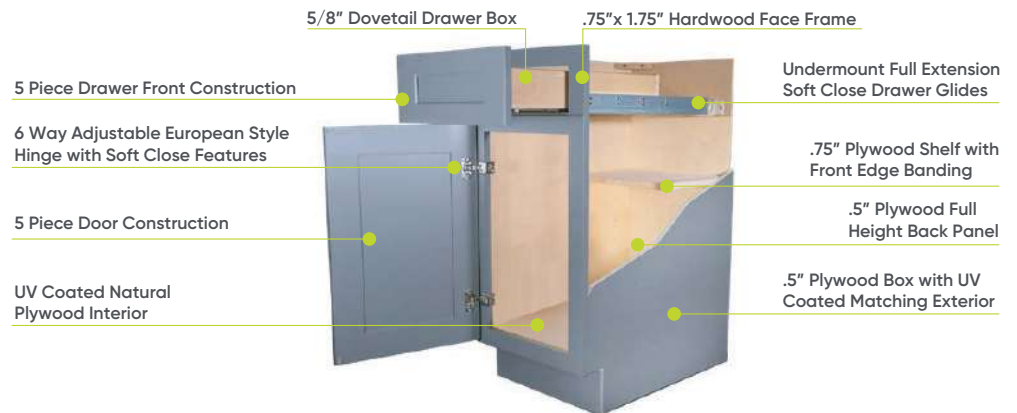
Frameless cabinets, often referred to as "full access" or European style cabinets, have been steadily gaining popularity in the United States. Unlike framed cabinetry, frameless cabinets do not utilize a face frame attached to the cabinet box but instead relies on a thicker box and support rails for strength. With the absence of face frame, full accessibility to the cabinet offers more storage solutions when compared to framed cabinetry.

At CabinetCorp, we offer a variety of full-overlay door styles and finishes for both our framed cabinets and frameless cabinetry. While our framed cabinets lean more towards a traditional design aesthetic and our frameless is more contemporary. Knowing the functionality differences plays a key role when designing your next project.

## Contempo Prime FRAMELESS CABINETS



## Traditional Prime FRAMED CABINETS



# Our best-selling cabinet styles



Oakley Whisper White



Oakley Machine Grey



Oakley Tawny Brown



Cambridge Antique White



Cambridge Sable



Tacoma White



Shaker Gray



Shaker Charcoal Gray



Shaker Dusk



Shaker Antique White



Shaker Navy



Shaker Black



Shaker White



Venus Pure Blanco



Venus Midnight Navy



Palena Gloss White



Tempo White Prairie



Tempo Dark Wilderness



Tempo Grey Wilderness





Oakley



Whisper White

# Oakley

## FRAMED CABINETS

- Framed Cabinet with Full Overlay Doors and Drawers
- Under Mount Full Extension Soft Close Drawer Glides
- Concealed European Style Hinges with Soft Close Features
- Solid Birch Door Frame with Veneered MDF Center Panel
- 1/2" Plywood Box with UV Coated Matching Exterior
- Glue & Staple or Metal Clip Assembly
- UV Coated Natural Interior

*\* Oakley Whisper White is a five piece HDF Door and Drawer*



Oakley Whisper White



Oakley Tawny Brown



Oakley Machine Grey



Cambridge



Antique White



# Cambridge

## TRADITIONAL PRIME FRAMED CABINETS

- Cabinet with Full Overlay Doors and Drawers
- Under Mount Full Extension Soft Close Drawer Glides
- Concealed European Style Hinges with Soft Close Feature
- Dovetail Drawer Box
- Solid Birch Frame with Solid Birch Center Panel \*CS
- Five Piece HDF Door \*CAW
- 1/2" Plywood Box with UV Coated Matching Exterior
- 3/4" Plywood Shelf with Front Edge Banding
- UV Coated Natural Interior



Cambridge Antique White



Cambridge Sable



Sable

Tacoma



# Tacoma

## TRADITIONAL PRIME FRAMED CABINETS

- Painted Cabinet with Full Overlay Doors and Drawers
- Under Mount Full Extension Soft Close Drawer Glides
- Concealed European Style Hinges with Soft Close Feature
- Dovetail Drawer Box
- Solid Birch Frame with Solid Birch Center Panel
- Five Piece HDF Door
- 1/2" Plywood Box with UV Coated Matching Exterior
- 3/4" Plywood Shelf with Front Edge Banding
- UV Coated Natural Interior



Tacoma White

*The bright white transitional Tacoma White door profile produces a modernized look with a beveled raised center panel.*





**Shaker**



**Shaker Navy**

# Shaker

## TRADITIONAL PRIME FRAMED CABINETS

- Painted Cabinet with Full Overlay Doors and Drawers
- Under Mount Full Extension Soft Close Drawer Glides
- Concealed European Style Hinges with Soft Close Feature
- Dovetail Drawer Box
- Five Piece HDF Door
- 1/2" Plywood Box with UV Coated Matching Exterior
- 3/4" Plywood Shelf with Front Edge Banding
- UV Coated Natural Interior

*"Charcoal Gray is a Stained Cabinet with a Solid Birch Door Frame with Veneered MDF Center Panel"*



Shaker Black



Shaker Black



Shaker Navy



Shaker Gray



Shaker Dusk



Shaker Antique White



Shaker White



Shaker Charcoal Gray



Venus Midnight Navy



Venus



# Venus

## FRAMELESS CABINETS

- Framless Full Access Construction
- Five Piece Painted HDF Door
- Universal 18mm Plywood Composite Cabinet Box with a Grey Linen Thermofused Interior Inside & Out
- Altamax Full Extension Soft-close Orion grey Drawer Box
- Hettich Sensys Adjustable 110° Soft-Closing Hinges
- Easylevel Leg System



Venus Midnight Navy



Venus Pure Blanco



Venus Pure Blanco

# Palena Gloss White



Gloss White

# Palena

## GLOSS WHITE FRAMELESS CABINETS

- High Gloss White PET Laminate Engineered Wood Door & Drawer with Seamless Edge Technology & White Melamine Back
- White Grey Linen Thermofused Melamine Carcass with Matching Interior
- Full Depth 18mm Adjustable Shelf with Full Edge Banding
- 18mm Plywood Composite Box
- Hettich Sensys Adjustable 110° Soft-Close Hinges
- Adjustable Black Leg Support Included
- Altamax Full Extension Soft-Close Orion Grey Drawer Box

*Palena Gloss White delivers a "high-end chic yet functional" look with its high gloss laminate finish & can be used in so many areas of your home.*



Palena Gloss White



Gloss White



Tempo



Dark Wilderness

# Tempo

## FRAMELESS CABINETS

- Horizontal Textured Melamine Grey Woodgrain Engineered Wood Door and Drawer Faces
- White Grey Linen Thermofused Melamine Carcass with Matching Interior
- Full Depth 18mm Adjustable Shelf with Full Edge Banding
- 18mm Plywood Composite Box
- Hettich Sensys Adjustable 110° Soft-Close Hinges
- Adjustable Black Leg Support Included
- Altamax Full Extension Soft-Close Orion Grey Drawer Box



Tempo White Prairie



Tempo Dark Wilderness



Tempo Grey Wilderness



# Closet Cabinets





Our closet cabinet solutions create the most wanted dream homes. CabinetCorp closet organizers are simple to configure and simple to install. We transform reach-in closets as easily as walk-ins with customizable double-hang cabinets, soft close drawers and cabinet doors, and tilting shoe shelves. We have closet solutions for every space and every personality. CabinetCorp also offers design services for closets and cabinets.

## DOOR STYLES



White



Salt Oak



Espresso



Espresso

## WIDTH OPTIONS



18 Inches



24 Inches



30 Inches

# Closet Cabinets

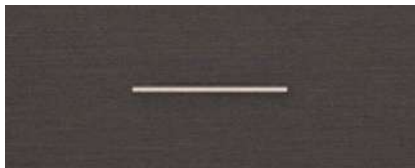


Slate Rift



Spiced Mahogany

## DOOR STYLES



Slate Rift



Spiced Mahogany



White

This Custom Closet System is a built-in, custom storage solution that can be used anywhere in the home.

Transform any closet into an organized, personalized, attractive space. Use it for walk-ins, reach-ins, pantries, linen closets, laundry, mudrooms, and more.

**Note:** The Cabinet systems are now available for purchase online. Please contact one of our designers to get started on a project





# Premium Flooring Collections

5 new collections with ranging premium SPC & WPC vinyl's. It's Unilin Uniclic locking system allows for a quick and easy floating installation. In addition, Like our cabinets, our flooring is backed with our limited lifetime warranty.



Resistant to water & moisture, won't swell, peel or buckle when exposed.



FloorScore certified for indoor air quality, free of phthalate, formaldehyde and VOC emissions.



Durable protection against indentations, stains and scratches.



ANTI MICROBIAL SURFACE

Impeding microorganisms growth, long term protection against bacteria, fungi, and molds.



Resistant to fire damage and won't assist the spread of fires.



Production designed to a sustainable environment. ZERO trees used.



Glacier Lake

# Pacific Umber Collection

PREMIUM WPC ENGINEERED VINYL

- Installation: Click
- Plank Size: 7" x 59"
- Overall Thickness: 8mm
- Wear Layer: 20mil
- Plank/box: 8
- SQFT/Box: 23.56
- Finishing: Embossed in Register



Montana



Montana



Gallatin Forest



Cherokee



Smokey Mountain



Ventura



Kobuk Valley



Bonita Springs



Florence

855.216.7970 | [www.cabinetcorp.com](http://www.cabinetcorp.com)



# Winterbury Green Collection

## WPC ENGINEERED VINYL

- Installation: Click
- Plank Size: 9" x 60"
- Overall Thickness: 8mm
- Wear Layer: 20mil
- Plank/box: 8
- SQFT/Box: 29.92
- Finishing: Handscrapped Emboss



Belmont



EWA Beach



Lincoln



Cheyenne



Fairview



Wyndmere



Gold Creek



Springbrook



# Pasadena Meadows Collection

RIGID CORE PRO MAX

- Installation: Click
- Plank Size: 9" x 60"
- Overall Thickness: 6.5mm
- Wear Layer: 20mil
- Plank/box: 6
- SQFT/Box: 22.64
- Finishing: Embossed in Register



Denali Sands



Lake House



Denali Sands



Caspian



Sierra Forest



Rocky Mountain



Glacier Lake



Austin



Olympic

# Castle Creek Collection

RIGID CORE LUXURY VINYL

- Installation: Click
- Plank Size: 7" x 48"
- Overall Thickness: 5mm
- Wear Layer: 12mil
- Plank/box: 12
- SQFT/Box: 28.68
- Finishing: Random



Redwood Falls



Laurel Springs



Heritage



Rosemary



Sandy Pointe



Redwood Falls



Hope Springs



Regent



Timber Lake



Avalon



Clear Lake



Golden Coast



Harmony





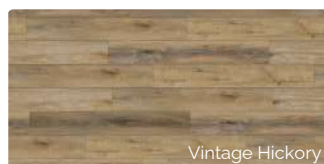
# Alexis River Collection

## RIGID CORE LUXURY VINYL

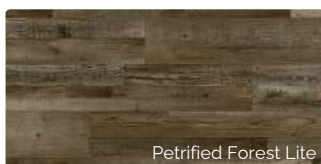
- Installation: Click
- Plank Size: 7" x 48"
- Overall Thickness: 5mm
- Wear Layer: 20mil
- Plank/box: 10
- SQFT/Box: 23.64
- Finishing: Wood Emboss



Vintage Cabin



Vintage Hickory



Petrified Forest Lite



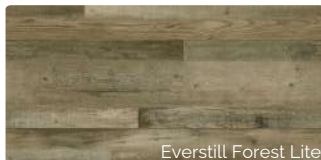
Placid Cabin



Fountain Hills



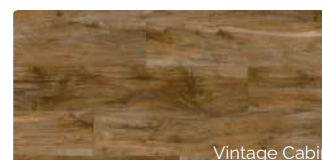
Carolina Hickory



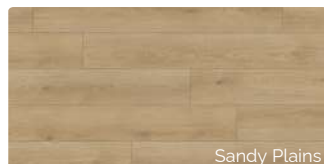
Everstill Forest Lite



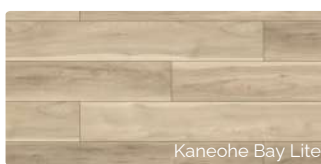
Brookfield



Vintage Cabin



Sandy Plains



Kaneohe Bay Lite



Golden Pine



Natural Oak





Cabinet Style

**Tempo Grey  
Wilderness**



Flooring Style

**Pacific UMBER  
Montana**





**CONTACT US  
TODAY  
TO GET STARTED!**

855.216.7970

[www.cabinetcorp.com](http://www.cabinetcorp.com)



**CABINETCORP™**